

# TARGETER WINGS

## MONITORING LEARNER'S PROGRESS



# GRADE 5 - 2021

## SCIENCE AND TECHNOLOGY

Name .....

School name .....

The teacher to fill the grid below after marking the learner's work.

Exceeds Expectations (48 - 50)	Meet Expectations (25 - 47)	Approaching Expectations (11 - 24)	Below expectations (0 - 10)
1	2	3	4

1. Write down five examples of plants that are green but do not produce flowers. (5mks)

- a) \_\_\_\_\_
- b) \_\_\_\_\_
- c) \_\_\_\_\_
- d) \_\_\_\_\_
- e) \_\_\_\_\_

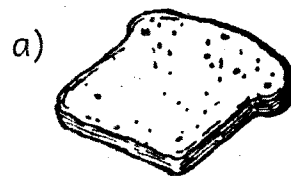
2. State four safety precautions that you should observe when handling harmful plants. (4mks)

- a) \_\_\_\_\_
- b) \_\_\_\_\_
- c) \_\_\_\_\_
- d) \_\_\_\_\_

3. Give three importance of fungi. (3mks)

- a) \_\_\_\_\_
- b) \_\_\_\_\_
- c) \_\_\_\_\_

4. Identify the following fungi. (2mks)

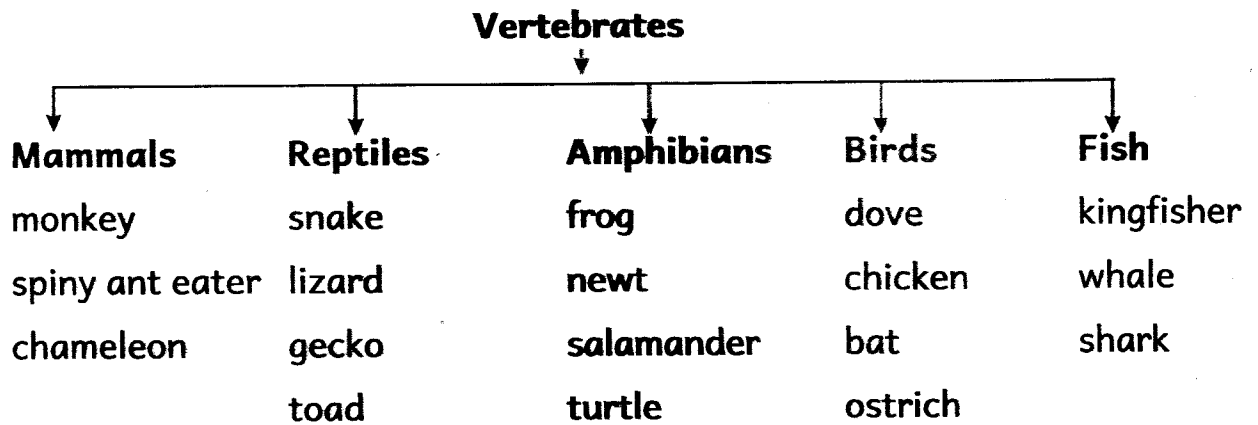


\_\_\_\_\_



\_\_\_\_\_

5. The chart below shows groups of vertebrates.



Which animals were **wrongly** classified?

(3mks)

---



---



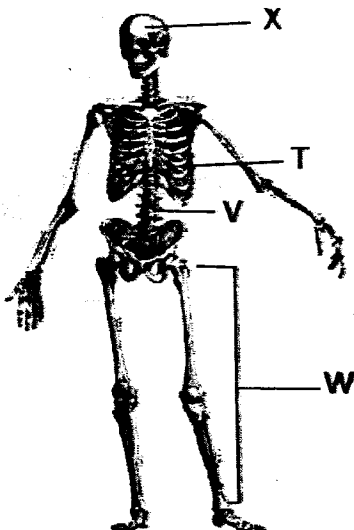
---

6. Write down four characteristics of reptiles. (4mks)

- a) \_\_\_\_\_
- b) \_\_\_\_\_
- c) \_\_\_\_\_
- d) \_\_\_\_\_

- a) X - \_\_\_\_\_
- b) T - \_\_\_\_\_
- c) V - \_\_\_\_\_
- d) W - \_\_\_\_\_

7. Name the following parts of the human skeleton. (4mks)



8. State **two** functions of the skeletal muscles. (2mks)

- a) \_\_\_\_\_
- b) \_\_\_\_\_

9. Write down five diseases that affect the breathing system. (5mks)

- a) \_\_\_\_\_
- b) \_\_\_\_\_
- c) \_\_\_\_\_
- d) \_\_\_\_\_
- e) \_\_\_\_\_

10. Name **five** parts of the breathing system. (5mks)

- a) \_\_\_\_\_
- b) \_\_\_\_\_
- c) \_\_\_\_\_
- d) \_\_\_\_\_
- e) \_\_\_\_\_

11. In which part of the breathing system does exchange of gases take place? (1mk)

\_\_\_\_\_

12. State **one** way of taking care of each of the following sense organs. (5mks)

a) The eyes

\_\_\_\_\_  
\_\_\_\_\_

b) The nose

\_\_\_\_\_  
\_\_\_\_\_

c) The ears

\_\_\_\_\_  
\_\_\_\_\_

d) The skin

\_\_\_\_\_  
\_\_\_\_\_

e) The tongue

\_\_\_\_\_  
\_\_\_\_\_

13. List **four** examples of waterborne diseases. (4mks)

- a) \_\_\_\_\_
- b) \_\_\_\_\_
- c) \_\_\_\_\_
- d) \_\_\_\_\_

14. Name the following parts of a computer. (3mks)



- M \_\_\_\_\_
- N \_\_\_\_\_
- P \_\_\_\_\_