

# DISTINCTION GRADE 6 (SIX) KPSEA ASSESSMENT

## MONITORING LEARNER'S PROGRESS

### GRADE SIX - 2023

# 6



QUALITY IS OUR CONCERN

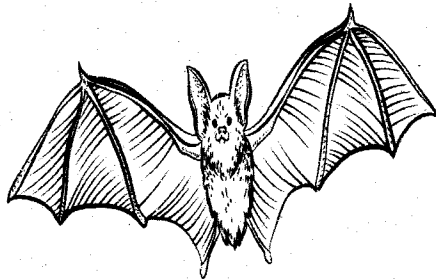
002

## INTEGRATED SCIENCE

PREMIER

### SCIENCE AND TECHNOLOGY

- The following are causes of water pollution **except**;  
A. treated sewage  
B. soil  
C. animal waste  
D. human waste
- Grade 5 learners observed the animal below during a nature walk.



It is true that the animal;

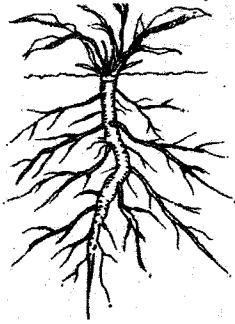
- reproduces by laying eggs.
  - breathes through gills.
  - is warm blooded.
  - does not feed the young ones through mammary glands.
- Which one of the following plants **does not** belong to the same group with the rest?  
A. cactus plant  
B. mint plant  
C. coriander plant  
D. rosemary plant
  - Identify the respiratory infection described below.
    - It is spread through air
    - The patient suffers from coughing and weight loss
    - It can be prevented by ensuring good air circulation in a room
    - Can also be prevented by boiling milk before drinking
    - pneumonia
    - asthma
    - tuberculosis
    - influenza

- Grade 6 learners from Kikwetu Academy uprooted a young plant and dipped it in coloured water for two hours. They used a razorblade to cut the stem after two hours. Which observation did the learners make?  
A. Roots of a plant absorb water and minerals salts from the soil.  
B. Stained coloured water was seen in the stem.  
C. The plant dried up.  
D. The roots absorbed the coloured water from the water.
- Which one of the following statements is **true** about the tooth below?

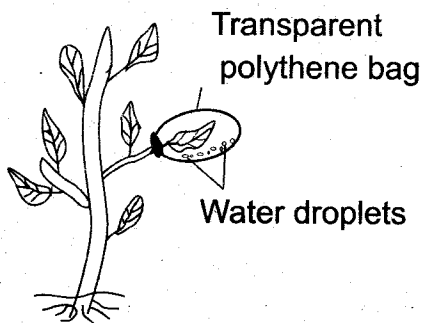


- It is used for tearing flesh
  - It is chisel shaped
  - They are four on one jaw
  - They are found between incisors and canines
- Digestion takes place at the following points **except**;  
A. mouth  
B. colon  
C. ileum  
D. stomach
  - The sheet of muscles found between the breathing system and the abdomen is known as;  
A. diaphragm  
B. bronchi  
C. windpipe  
D. air sacs
  - The following changes of state require increase in temperature. Which one **does not**?  
A. melting  
B. evaporation  
C. sublimation  
D. freezing
  - Which one of the following is a base?  
A. lemonade  
B. soap gel  
C. orange juice  
D. sour milk

11. Identify the plant with the type of roots shown below.



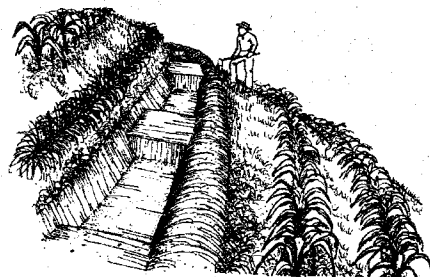
- A. maize plants  
B. grass  
C. sugarcane plant  
D. bean plant
12. Heat from the sun reaches our bodies by;  
A. radiation  
B. conduction  
C. convection  
D. transformation
13. Awino was asked to write down signs and symptoms of cholera. She wrote the following:  
i) Nausea and vomiting  
ii) Stomach pains  
iii) Urinating blood  
iv) Dehydration  
Which of the signs and symptoms was wrongly written?  
A. ii  
B. i  
C. iii  
D. iv
14. Which one of the following is **not** an effect air pollution?  
A. It may cause difficulty in breathing  
B. It may cause poor growth of plants  
C. It may cause water borne diseases  
D. It may cause poor visibility
15. Fanaka carried out the experiment below to investigate the functions of leaves.



- Fanaka was investigating;  
A. photosynthesis in plants  
B. transpiration in plants  
C. respiration in plants  
D. hydrolysis in plants

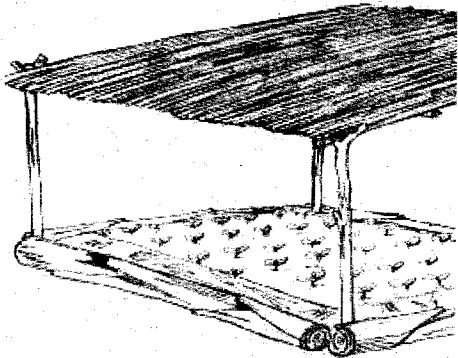
## AGRICULTURE

16. The process of collecting eroded soil from its deposition back to the farm for farming is known as;  
A. soil conservation.      B. soil preservation.  
C. soil recovery.          D. soil improvement.
17. Kimwele observed a type of soil erosion near the roof of their house. It is likely that the type of erosion was;  
A. rill erosion                  B. splash erosion  
C. gully erosion               D. sheet erosion
18. Which one of the following animals can be used for transport and providing milk?  
A. camel                          B. a bull  
C. horse                          D. donkey
19. Which one of the following is **not** deterrent?  
A. safe traps                      B. wire mesh  
C. deflectors                      D. shading
20. The two main agents of soil erosion are \_\_\_\_\_ and \_\_\_\_\_.  
A. animals, wind                B. water, animals  
C. water, rain                      D. wind, water
21. I am a type of soil erosion. I cannot be noticed easily when occurring. What is my name?  
A. Sheet erosion                 B. Gully erosion  
C. Splash erosion                D. Rill erosion
22. Which one of the following statements is **not true** about small wild animals?  
A. Protecting wildlife creates more jobs.  
B. Wild animals generate revenue through local and international tourism.  
C. Some animals destroy our crops and some kill our domestic animals.  
D. We should kill the wild animals that destroy our crops.
23. Identify the method of controlling soil erosion shown below.



- A. building gabions              B. contour ploughing  
C. cover cropping                D. planting of trees
24. The following are ways of reducing evaporation of water in farming. Which one is **not**?  
A. drip irrigation                B. mulching  
C. shading                          D. cover cropping

25. It is **true** that climbing crops have;  
 A. weak stems.                      B. strong branches.  
 C. strong stems.                     D. strong roots.
26. Which of the following practices ensures that the farmer has few healthy seedlings in the nursery bed?  
 A. thinning                              B. pruning  
 C. mulching                             D. shading
27. Wamalwa was asked to name some crops that are grown in soil that retains the highest amount of water. It is likely that his answer was;  
 A. cassava and sweet potatoes  
 B. rice and yams  
 C. sugarcane and maize  
 D. coconut and groundnuts
28. Which one of the following statements is **not true** about the practice shown below?



- A. It reduces water evaporation in the nursery  
 B. It should be done just before transplanting the seedlings  
 C. It should be reduced before transplanting  
 D. It prevents the seedlings from drying up
29. Mkulima noticed that some small wild animals were causing damage to his crops. The animals were eating the roots of the crops, therefore the crops kept on withering and drying up. Which animals do you think were damaging his crops?  
 A. birds                                      B. moles  
 C. mongoose                                D. monkeys
30. Which of the following is **not** a way of conserving water in the soil?  
 A. mulching                                B. cover cropping  
 C. shading                                    D. irrigating

### HOME SCIENCE

31. Fragile utensils can be made from each of the following **except** \_\_\_\_\_  
 A. glass materials  
 B. earthenware  
 C. ceramic material  
 D. plastic materials

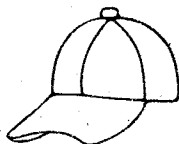
32. Which one of the following common communicable diseases can be controlled by immunisation?  
 A. Covid 19                                B. Flu  
 C. Cholera                                 D. Ringworms
33. The following are advantages of a certain type of a house.  
 i) Building materials can be found locally are cheap and some are free.  
 ii) They are easy to build.  
 iii) Extra houses can easily be provided.  
 Which type of house is described above?  
 A. Traditional House  
 B. Bungalow  
 C. Flat  
 D. Apartments
34. Which of the following is **true** about an advertisement?  
 A. It may show where the goods and services are found.  
 B. It should not indicate the price of the goods and services.  
 C. It makes the goods more expensive.  
 D. It should only be made for goods that are cheap.
35. Which one of the following does **not** help in the physical development of an adolescent?  
 A. Playing                                  B. Eating a balanced diet  
 C. Exercising                              D. Education
36. Grade 6 learners were asked to name changes that occur in adolescent boys only. Who gave the correct answer?  
 A. ZAWADI: Growth of hair in armpits and pubic areas  
 B. NURU: Experience wet dreams  
 C. FANAKA: Acne appears  
 D. WEMA: Menstrual cycle starts
37. Which one of the following is **NOT** a responsibility of the consumer?  
 A. Know what he or she needs to buy at a particular time.  
 B. Compare available goods on the market so as to choose the best.  
 C. Determine the price of commodities on the market.  
 D. Regulate the types of businesses people carry out.
38. The following are reasons why adolescents are advised to exercise **except** \_\_\_\_\_  
 A. it makes one famous  
 B. it helps in controlling weight  
 C. it improves cardiorespiratory fitness  
 D. it reduces risk of developing heart diseases

39. Which one of the following is a cosmetic?

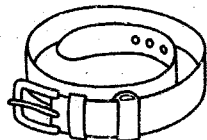
A.



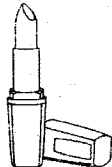
B.



C.



D.



40. Grade 6 learners were asked to name common communicable diseases. Which of the diseases can be transmitted without coming into contact with people suffering from the disease?

- A. Chickenpox                      B. Ringworms  
C. Tuberculosis                    D. Scabies

### PHYSICAL HEALTH EDUCATION

41. In long jump, what is the name given to the point where you jump from?

- A. runway                              B. landing pit  
C. take off board                    D. jumping spot

42. Which technique is shown in the picture below?



- A. Shoulder shrug technique  
B. Drop finish technique  
C. Bunch start technique  
D. Bullet start technique

43. Which of the following statements is **true** about the non-visual baton exchange?

- A. The runner who is receiving the baton does not see the baton placed in his or her hand.  
B. The runner who is giving out the baton does not see the baton placed in his or her hand.  
C. Both the one who is receiving and the one giving the baton do not see the baton during exchange.  
D. Both the one who is receiving and the one giving the baton can see the baton during exchange.

44. When performing elongated start in athletics, what should one do at the command 'set'?

- A. Leave the starting point  
B. Place one foot behind the starting line  
C. Lift the knee of the back leg off the ground  
D. Place hands on the ground shoulder width apart behind the starting line

45. During the baton exchange, one is advised **NOT** to;

- A. run at a high speed with the baton.  
B. keep his or her lane when carrying the baton.  
C. carry the baton in the left hand.  
D. put the baton in the mouth.

46. During a Kabaddi game, Fanaka got into the opponents court chanting "Kabaddi", "Kabaddi", "Kabaddi". This is referred to as;

- A. raiding                              B. entry  
C. footwork                            D. touching

47. The Rounders game is played by players referred to as;

- A. fielders and batters  
B. attackers and defenders  
C. strikers and batters  
D. fielders and defenders

48. Omollo performed the skill below during a Physical Education lesson.



Which of the given statements is **true** about the skill?

- A. It cannot be used to pass the ball in volleyball.  
B. It is used when the ball is above the head.  
C. It cannot be used to receive the ball in volleyball.  
D. It is used when the ball is below the head.

49. Kyalo wanted to preserve some food to be eaten the following day after exercise. Which method would you advise him to use?

- A. sun drying                            B. boiling  
C. canning                                D. smoking

50. The following are causes of conflict and disagreement in sports. Which of the conflicts can be controlled by a good referee?

- A. Favouring some players  
B. Lack of planning  
C. Lack of enough space  
D. Unwillingness to share resources