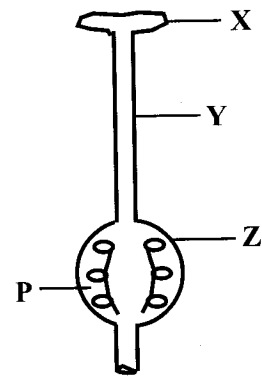


1. Which one of the following blood vessels transports blood away from the heart under high pressure?
  - A. Pulmonary artery
  - B. Aorta
  - C. Pulmonary vein
  - D. Venacava
  
2. Three of the following are social effects of drug abuse except
  - A. poor judgement
  - B. truancy
  - C. marital conflicts
  - D. accidents
  
3. The type of clouds that are formed high in the sky are also likely to
  - A. look like mountains
  - B. be dark grey in colour
  - C. be rain-ladden
  - D. indicate fine weather
  
4. The following functions are performed by plant leaves except
  - A. storage of food
  - B. making of plant food
  - C. transpiration
  - D. absorption of nutrients
  
5. Which one of the following characteristics is common between a frog and a turtle?
 

Both

- A. change their body temperature with the environment
- B. have external fertilization
- C. have their bodies covered with scales
- D. live partly in water or on land

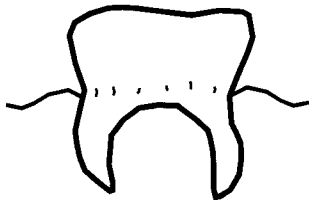
6. The diagram below shows parts of a flower



The parts marked P, X, Y and Z represent the

- A. stamen
  - B. corolla
  - C. carpel
  - D. calyx
- 
7. Anyango went to the hospital and was diagnosed with the following signs and symptoms:
    - i) *Fever*
    - ii) *Blood stained faeces*
    - iii) *Skin rashes*
    - iv) *Pain in the lower parts of the stomach*
 Anyango was likely to be suffering from
    - A. typhoid
    - B. malaria
    - C. cholera
    - D. bilharzia

20. The diagram below shows a human tooth



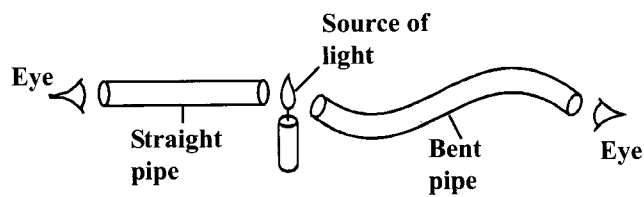
Which one of the following statements is NOT true about the above tooth?

- A. It is used for grinding and chewing food
  - B. It has rough edges
  - C. They are twelve in total in the mouth
  - D. They are the last teeth to be shed
21. The illustration below shows a simple food chain.
- Kales → Aphids → Praying mantis → Frogs**
- Which of the following will happen if all the praying mantis are killed?
- A. Aphids will decrease
  - B. Frogs will increase
  - C. Kales will decrease
  - D. Kales will increase
22. Which of the following is the main function of plasma in blood?
- A. Prevent the entry of germs into the body through wounds
  - B. Transport digested food nutrients
  - C. Transport oxygen to all body parts
  - D. Fight disease - causing germs
23. Which one of the following is a natural way of lighting a house?

- A. Lighting candles
- B. Using electricity
- C. Lighting lamps
- D. Using translucent roofs

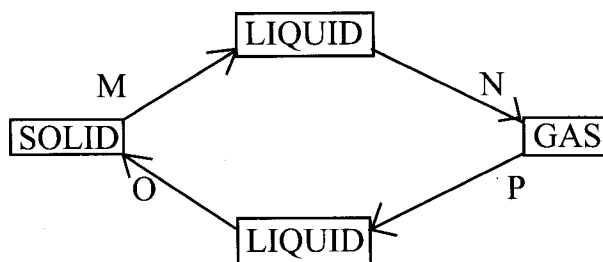
24. Which of the following substances found in tobacco causes addiction?
- A. Nicotine
  - B. Carbon monoxide
  - C. Tar
  - D. Smoke
25. The main reason why chemicals should not be stored in food stuff containers is to
- A. avoid contamination
  - B. prevent fire outbreaks
  - C. avoid wrong usage
  - D. ensure good utilisation of the chemicals
26. Three of the following are conditions necessary for a maize seed to germinate. Which one is NOT?
- A. Favourable temperature
  - B. Moisture
  - C. Oxygen
  - D. Sunlight
27. Which of the following planets form the inner planets?
- A. Mars and Jupiter
  - B. Neptune and Uranus
  - C. Mercury and Venus
  - D. Earth and Mars

28. Std. 7 pupils from Masomo Primary School did the experiment below to investigate a certain property of light



Which one of the following were the pupils investigating?

- A. Sources of light  
 B. How light travel  
 C. Reflection of light  
 D. Dispersion of light
29. The following are characteristics of insect-pollinated flowers except
- A. they have a pleasant scent  
 B. they have a sticky stigma  
 C. they have a brightly coloured petals  
 D. they have feathery anthers
30. The chart below shows the changes of state in matter



Which processes marked M, N, P and O represent condensation and melting respectively?

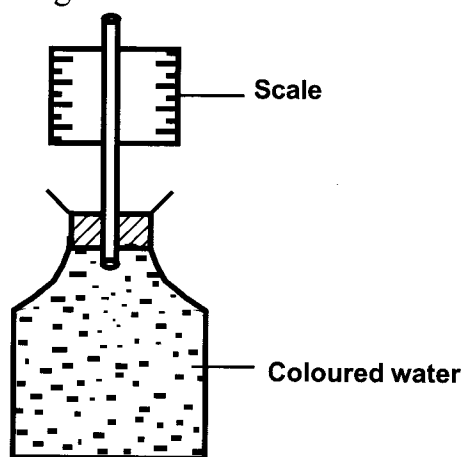
- A. N and P  
 B. M and P  
 C. P and N  
 D. P and M
31. Which one of the following groups consists of non-green plants only?

- A. Mushroom, puffball, toadstool  
 B. Pine, fern, algae  
 C. Cypress, mould, penicillium  
 D. Grass, avocado, moss

32. Which one of the following animal feeds is preserved by compressing it to remove moisture and air?
- A. Pasture  
 B. Fodder  
 C. Hay  
 D. Silage
33. Which one of the following is an industrial use of water?
- A. Mixing farm chemicals  
 B. Making pulp  
 C. Boat racing  
 D. Skiing
34. Which one of the following physical changes during adolescence occur to both boys and girls?
- A. Broadening of hip bones  
 B. Enlargement of shoulders  
 C. Production of mature sex cells  
 D. Growth of hair on the chest
35. Which one of the following is an effect of HIV/AIDS to an individual?
- A. Lack of parental love and care  
 B. Sadness in the family  
 C. Family members feel ashamed  
 D. Low self esteem
36. Heat transfer through convection takes place in
- A. gases and liquids

8. Which one of the following gases is used by plants for respiration at night?
- Oxygen
  - Carbon dioxide
  - Rare gases
  - Nitrogen

9. The diagram below shows a weather measuring instrument



Which one of the following statements is NOT correct about the above weather instrument?

- On a hot day, the scale increases downwards
  - It uses the principle that liquids expand when heated and contract when cooled
  - The water is coloured to increase visibility
  - The scale reads from bottom to top
10. The vaccine administered to infants at the 6th, 10th and 14th week is used to prevent the following diseases except
- tetanus
  - whooping cough
  - tuberculosis
  - diphtheria

11. The following are characteristics of a certain type of soil

- It has large air spaces
- It holds very little water
- It has poor capillarity

The soil described above is also likely to

- mix easily with cement during construction
- make the longest ribbons
- be sticky when wet and crack when dry
- have a smooth texture

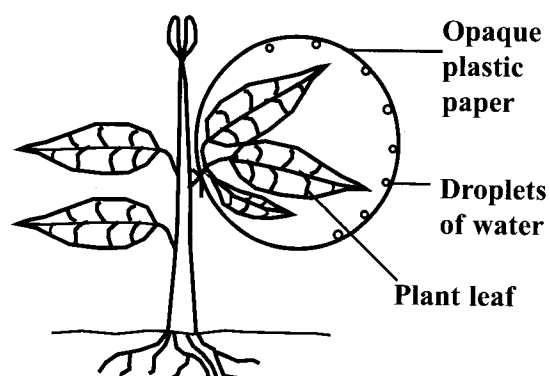
12. Which one of the following constituents of a balanced diet provides farm animals with energy?

- Molasses, fish meal, legumes
- Bone meal, salt lick, maize stalks
- Legumes, napier grass, maize seeds
- Molasses, rice husks, maize germ

13. Which one of the following methods conserves water by using it for more than one purpose?

- Recycling
- Re-using
- Harvesting
- Mulching

14. Std 5 pupils at Matura Primary School carried out an experiment as shown below



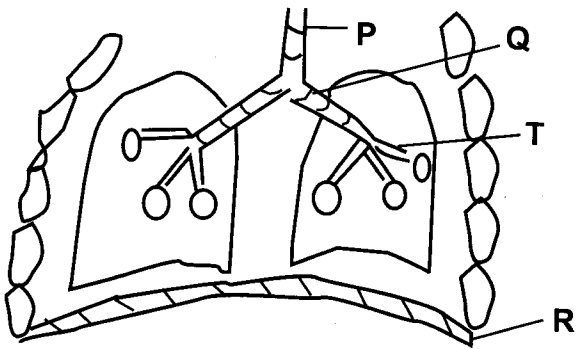
What were they investigating?

- A. Photosynthesis in plants
- B. Transpiration in plants
- C. Transportation in plants
- D. Respiration in plants

15. Which one of the following food stuffs can be preserved by smoking, salting and sundrying?

- A. Grains
- B. Vegetables
- C. Fish
- D. Fruits

16. The diagram below shows the breathing system in human beings



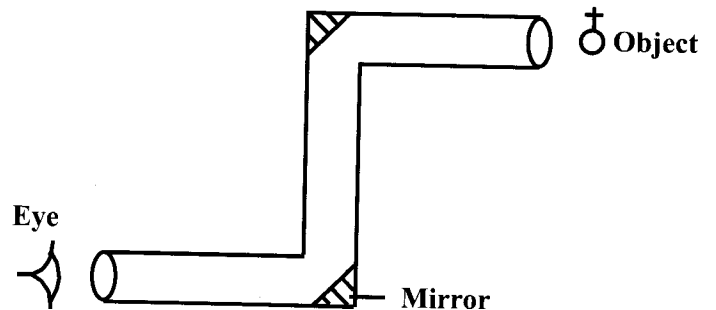
Which of the parts marked P, Q, R and T is kept open by C-shaped rings called cartilage?

- A. P
- B. R
- C. T
- D. Q

17. Which one of the following is an advantage of using manures to improve soil fertility?

- A. They are needed in small quantities
- B. They are easy to transport
- C. They do not burn crops
- D. They provide specific plant nutrients

18. The diagram below shows a periscope



The periscope works on one of the following principles of light. Which one?

- A. Light can be refracted
- B. Light can be dispersed
- C. Light travels around corners
- D. Light can be reflected

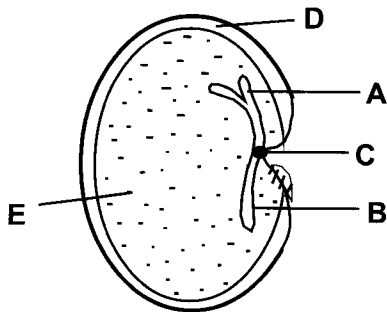
19. Which one of the following methods preserve food by causing dehydration?

- A. Salting and use of ash
- B. Use of honey and smoking
- C. Drying and salting
- D. Drying and use of low temperatures

- B. liquids and solids
- C. gases only
- D. liquids only

37. Which one of the following consists of a pair of bad conductors of heat only?
- A. Cloth, aluminium
  - B. Paper, wood
  - C. Copper, steel
  - D. Iron, water

38. The diagram below shows a germinating bean seed.



Which parts represent the embryo?

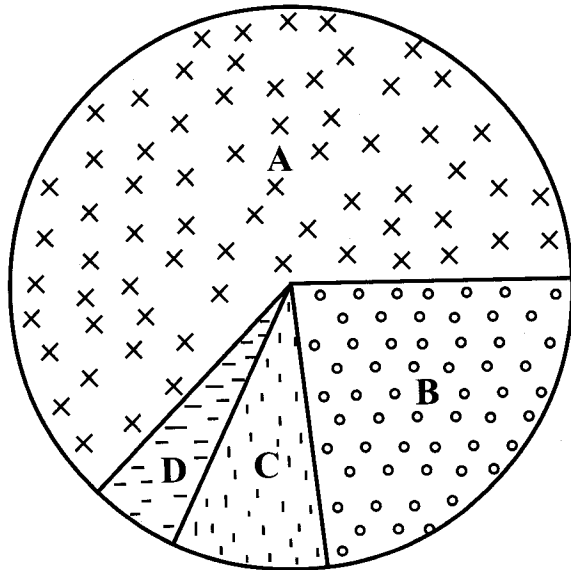
- A. D, E
  - B. C, E
  - C. B, C
  - D. A, B
39. Which one of the following methods of grazing requires the construction of an electric fence?
- A. Stall feeding
  - B. Paddock grazing
  - C. Strip grazing
  - D. Tethering
40. A plastic cup floats in water while an iron nail sinks. This is due to the difference in their

- A. material
- B. weight
- C. shape
- D. density

41. Which one of the following is a by-product of photosynthesis?
- A. Oxygen
  - B. Chlorophyll
  - C. Sunlight
  - D. Water and mineral salts
42. Which one of the following ways of maintaining simple tools is NOT applied on all tools?
- A. Using tools for the right job
  - B. Oiling tools before storing them
  - C. Cleaning tools after use
  - D. Storing tools properly after use
43. Which one of the following statements is CORRECT? To stop a moving object
- A. the force applied should be more than the opposite force
  - B. the force applied should be less than the opposite force
  - C. the force applied should be equal to that of the moving object but in the opposite direction
  - D. the moving object should be accelerated
44. Which one of the following pairs of diseases can best be prevented by draining stagnant water?

- A. Typhoid, cholera
- B. Malaria, bilharzia
- C. Bilharzia, tuberculosis
- D. Cholera, malaria

45. The pie chart below shows air composition



Which pair of components will add up to approximately 79%?

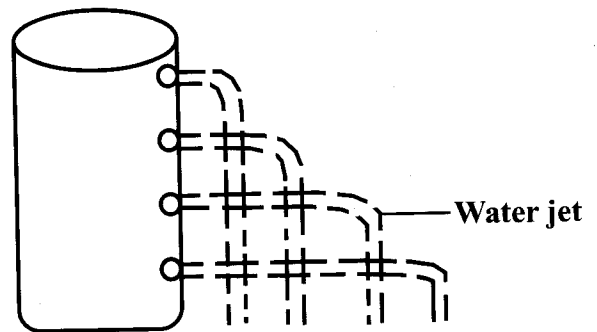
- A. C and D
  - B. A and B
  - C. A and C
  - D. B and C
46. One of the following crop pests is wrongly matched with the part of the crop it attacks. Which one is it?

	Pest	Part attacked
A.	Weevils	Grains
B.	Stalkborers	Stems
C.	Aphids	Roots
D.	Cutworms	Stems

47. Which one of the following is NOT a use of heat energy?
- A. Ironing clothes
  - B. Drying grains
  - C. Discouraging pests
  - D. Warming the house

48. Which one of the following is used to measure the quantity of matter in a substance?
- A. A beam balance
  - B. A spring balance
  - C. A newton meter
  - D. A ruler

49. The experiment below was carried out by pupils of Kabura Primary School



The pupils concluded that

- A. pressure in liquids decreases with height
  - B. pressure in liquids increases with height
  - C. pressure in liquids is exerted in all directions
  - D. pressure in liquids decreases with depth
50. Which of the following states of matter transmits sound poorest?
- A. Vacuum
  - B. Solids
  - C. Liquids
  - D. Gases