

# UTUMISHI ACADEMY

Name.....

Date.....

Signature.....

**448/2**

**ELECTRICITY (*Practical*)**

**Paper 2**

**December 2021**

## **Kenya Certificate of Secondary Education**

### **MARKING SCHEME**

#### **EXERCISE 1**

<b>Area to be marked</b>	<b>Maximum score</b>	<b>Awarded score</b>
Border line	<b>1</b>	
Title block	<b>2</b>	
Placements	<b>3</b>	
Correctly drawn detailed views	<b>6</b>	
Line work	<b>3</b>	
Neatness	<b>1</b>	
Clarity	<b>2</b>	
Dimensions	<b>2</b>	
<b>TOTAL</b>	<b>20</b>	

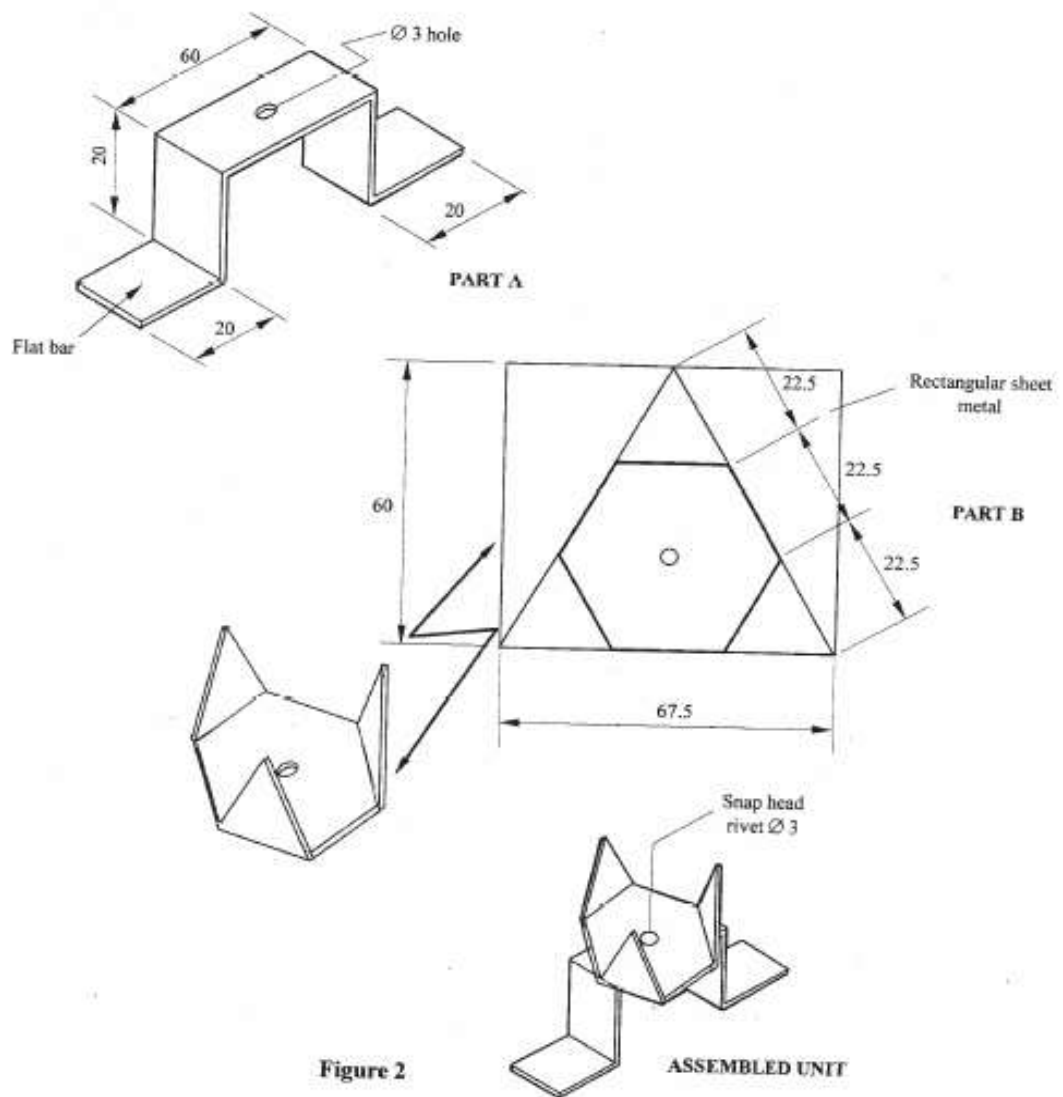
#### **EXERCISE 2**

<b>Area to be marked</b>	<b>Maximum score</b>	<b>Awarded score</b>
Correct dimension	<b>6</b>	
Folds	<b>5</b>	
Debarring	<b>2</b>	
Correct hole position	<b>2</b>	
Drill	<b>2</b>	
Rivet	<b>2</b>	
General appearance	<b>1</b>	
<b>Total</b>	<b>20</b>	

<b>Area to be marked</b>	<b>Maximum score</b>	<b>Awarded score</b>
ccu firm	<b>1</b>	
Dimensions	<b>3</b>	
Switch firm	<b>1</b>	
Holder firm	<b>1</b>	
Saddles well-spaced	<b>3</b>	
Horizontal run	<b>1</b>	
Vertical runs	<b>1</b>	
Perpendicular bends	<b>2</b>	
Color code	<b>3</b>	
Wire termination	<b>2</b>	
Switch connection	<b>2</b>	
<b>Total</b>	<b>20</b>	

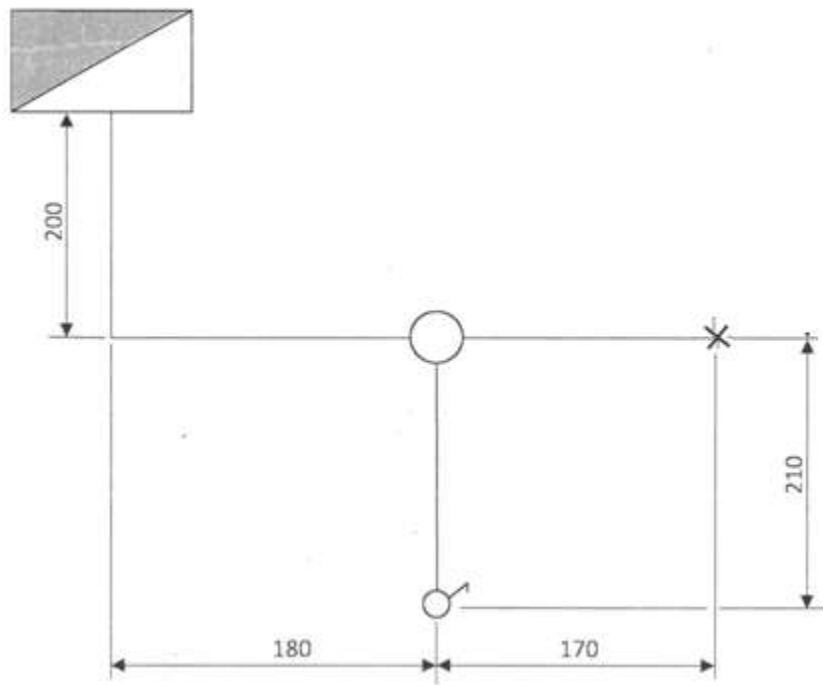
## EXERCISE 2

Using the materials, tools and equipment provided, fabricate the stand as shown in the figure 2 below. (20 marks)



### EXERCISE 3

Figure 3 below shows a lighting circuit. Using materials, tools and equipment provided, install the circuit such that the switch controls the lamp. (20 marks)



LAST PAGE