

443/2

— **AGRICULTURE** — **Paper 2**
(THEORY)

Apr. 2021 – 2 hours



Name Index Number

Candidate's Signature Date

Instructions to candidates

- Write your name and index number in the spaces provided above.
- Sign and write the date of examination in the spaces provided above.
- This paper consists of **three** sections; **A, B and C**.
- Answer **all** the questions in sections **A and B**.
- Answer any **two** questions in section **C**.
- All answers should be written in the spaces provided.
- This paper consists of 16 printed pages.**
- Candidates should check the question paper to ascertain that all the pages are printed as indicated and that no questions are missing.**
- Candidates should answer the questions in English.**

For Examiner's Use Only

Section	Question	Maximum Score	Candidate's Score
A	1–17	30	
B	18–21	20	
C		20	
		20	
Total Score		90	

Enhanced by Atikaschool.Org & Elimuspace.co.ke



SECTION A (30 marks)

Answer all the questions in this section in the spaces provided.

Enhanced by Atikaschool.Org & Elimuspace.co.ke

1. State **two** functions of walking area in a zero grazing unit.

(1 mark)

.....
.....

2. Give **four** characteristics of succulent roughages.

(2 marks)

.....
.....
.....
.....

3. State **four** symptoms of contagious abortion.

(2 marks)

.....
.....
.....
.....

4. State **four** factors considered when selecting eggs for marketing.

(2 marks)

.....
.....
.....
.....

Enhanced by Atikaschool.Org & Elimuspace.co.ke

5. State **four** maintenance practices that should be carried out on a hoof cutter. (2 marks)

.....
.....
.....
.....

6. State **four** limitations of a tractor as a source of power on the farm. (2 marks)

.....
.....
.....
.....

7. Name **four** beef cattle breeds. (2 marks)

.....
.....
.....
.....

8. State the origin of each of the following dairy cattle breeds: (1 mark)

- (a) Friesian
- (b) Ayrshire

9. State **four** control measures for foot rot. (2 marks)

.....
.....
.....

10. State **four** signs of heat in pigs. (2 marks)

.....

.....

.....

.....

11. State **two** categories of livestock parasites. (1 mark)

.....

.....

12. Name **two** types of calf pens used in cattle production. (1 mark)

.....

.....

13. State **four** ways in which identification in livestock production is important. (2 marks)

.....

.....

.....

.....

14. State **four** preventive measures for livestock diseases. (2 marks)

.....

.....

.....

.....

15. State **four** reasons for castration in livestock production. (2 marks)

.....

.....

.....

.....

16. Name **four** causes of livestock diseases. (2 marks)

.....

.....

.....

.....

17. State **four** methods of fish preservation. (2 marks)

.....

.....

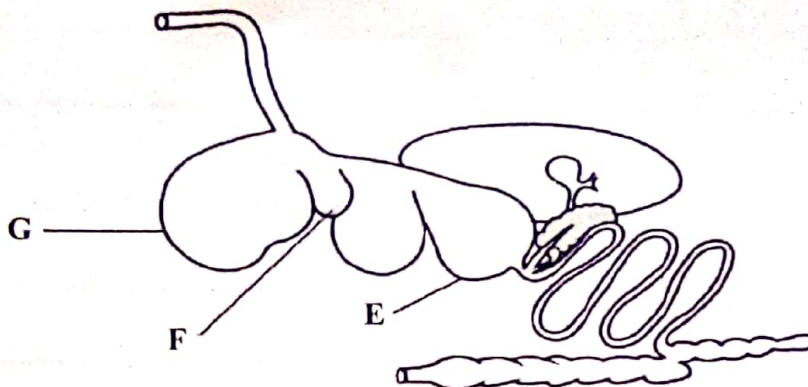
.....

.....

SECTION B (20 marks)

Answer *all* the questions in this section in the spaces provided.

18. Below is an illustration of the digestive system of livestock.



(a) Name **one** livestock with the digestive system illustrated above. (1 mark)

.....

(b) Name the part labelled:

E (1 mark)

F (1 mark)

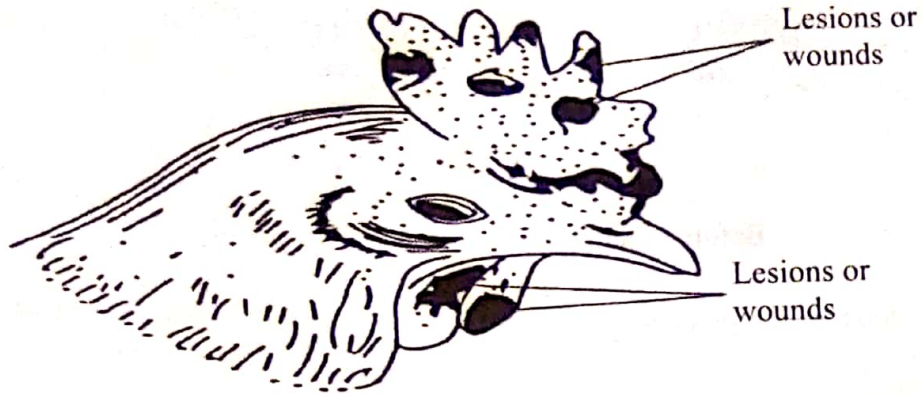
(c) State **two** functions of the part labelled part **G**. (2 marks)

.....

.....

.....

19. Below is an illustration of a bird infected with a poultry disease.



(a) (i) Identify the disease. (1 mark)

.....

(ii) Name another body part also affected by the lesions or wounds. (1 mark)

.....

(b) State **two** predisposing factors of the disease. (2 marks)

.....
.....

(c) State **one** control measure of the disease. (1 mark)

.....
.....

20. Below is an illustration of a practice carried out in poultry.



Before practice



After practice

(a) (i) Identify the practice. (1 mark)

.....

(ii) Give **one** reason why the use of a hot iron is recommended for the practice illustrated. (1 mark)

.....

.....

(b) Name **two** poultry vices controlled by the practice illustrated. (2 marks)

.....

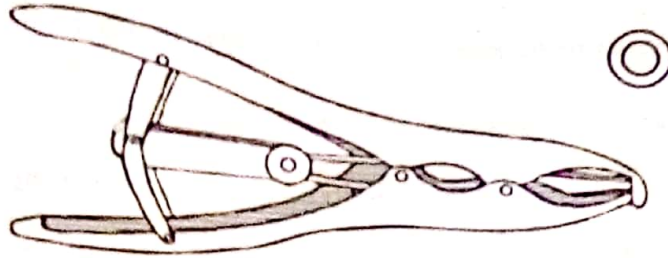
.....

(c) State **one** feeding practice that helps to control these poultry vices. (1 mark)

.....

.....

21. Below is a diagram of a tool used in livestock rearing.



(a) Identify the tool. (1 mark)

.....

(b) State **two** uses of the tool. (2 marks)

.....
.....

(c) Give **two** reasons why farmers prefer using the tool. (2 marks)

.....
.....

SECTION C (40 marks)

Answer any two questions from this section in the spaces provided after question 24.

- 22. (a) Describe **seven** requirements of an ideal calf pen. (7 marks)
- (b) State the disadvantages of natural mating in livestock breeding. (8 marks)
- (c) Explain **five** predisposing factors of mastitis disease in dairy farming. (5 marks)

- 23. (a) Explain **nine** qualities of an ideal brooder for day old chicks. (9 marks)
- (b) Describe the working mechanism of a four-stroke cycle engine. (11 marks)

- 24. (a) Explain **five** control measures for tapeworms. (5 marks)
- (b) Give the functions of **ten** equipment used in clean milk production. (10 marks)
- (c) Describe the life cycle of a one-host tick. (5 marks)

Enhanced by Atikaschool.Org & Elimuspace.co.ke

.....

.....

.....

.....

.....

.....

.....

.....

.....

.....

.....